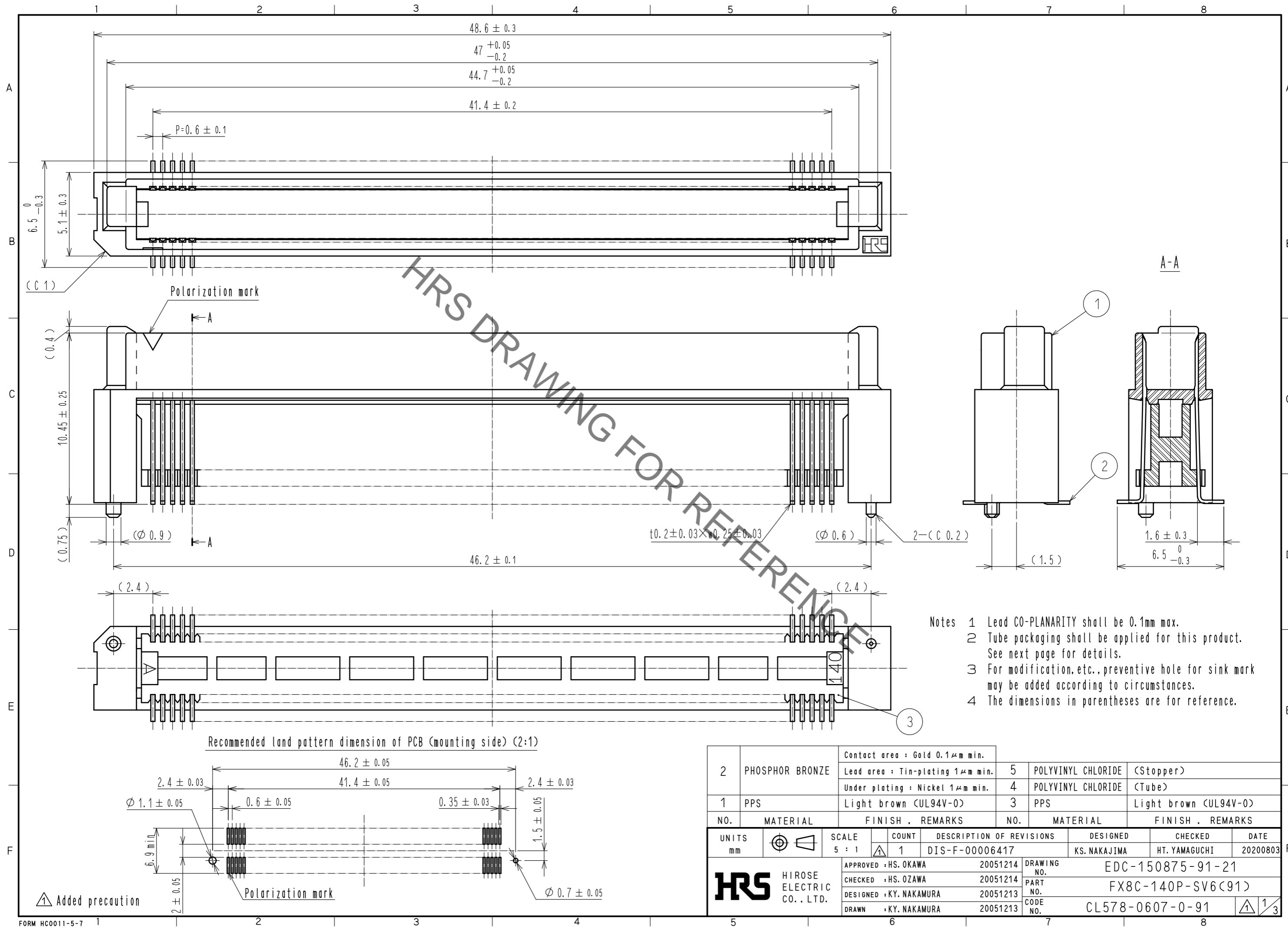


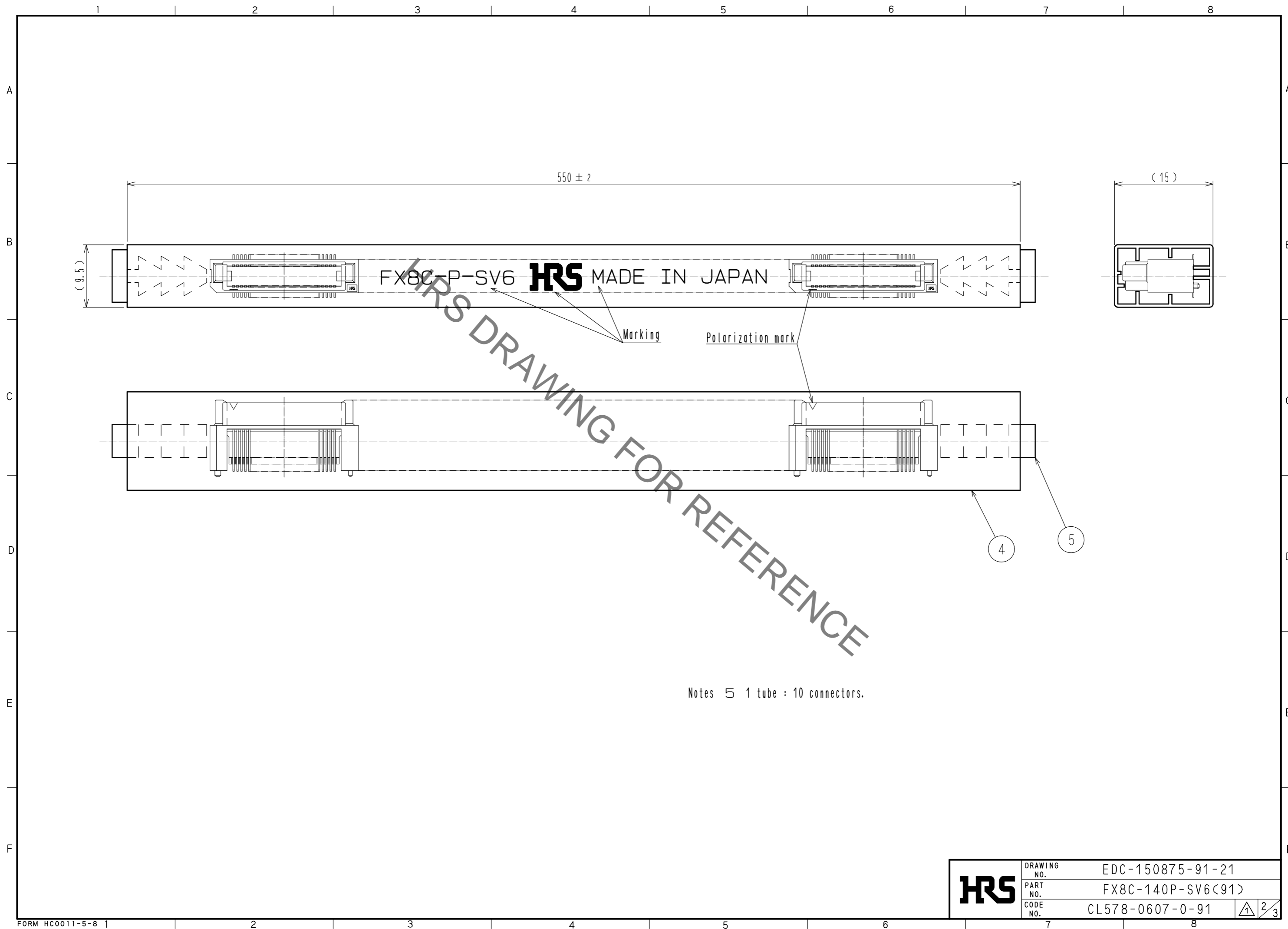
Sep.1.2020 Copyright 2020 HIROSE ELECTRIC CO., LTD. All Rights Reserved.  
In case of consideration for using Automotive equipment / device which demand high reliability, kindly contact our sales window correspondents.



- Notes
- 1 Lead CO-PLANARITY shall be 0.1mm max.
  - 2 Tube packaging shall be applied for this product. See next page for details.
  - 3 For modification, etc., preventive hole for sink mark may be added according to circumstances.
  - 4 The dimensions in parentheses are for reference.

2	PHOSPHOR BRONZE	Contact area : Gold 0.1 $\mu$ m min.	5	POLYVINYL CHLORIDE	(Stopper)
		Lead area : Tin-plating 1 $\mu$ m min.	4	POLYVINYL CHLORIDE	(Tube)
1	PPS	Under plating : Nickel 1 $\mu$ m min.	3	PPS	Light brown (UL94V-0)
		Light brown (UL94V-0)			
NO.	MATERIAL	FINISH . REMARKS	NO.	MATERIAL	FINISH . REMARKS
UNITS		SCALE	COUNT	DESCRIPTION OF REVISIONS	
mm		5 : 1	1	DIS-F-00006417	
APPROVED : HS. OKAWA			20051214	DESIGNED	
CHECKED : HS. OZAWA			20051214	KS. NAKAJIMA	
DESIGNED : KY. NAKAMURA			20051213	CHECKED	
DRAWN : KY. NAKAMURA			20051213	HT. YAMAGUCHI	
DATE			20200803		
DRAWING NO.			EDC-150875-91-21		
PART NO.			FX8C-140P-SV6(91)		
CODE NO.			CL578-0607-0-91		
HRS			1/3		

Sep.1.2020 Copyright 2020 HIROSE ELECTRIC CO., LTD. All Rights Reserved.  
In case of consideration for using Automotive equipment / device which demand high reliability, kindly contact our sales window correspondents.

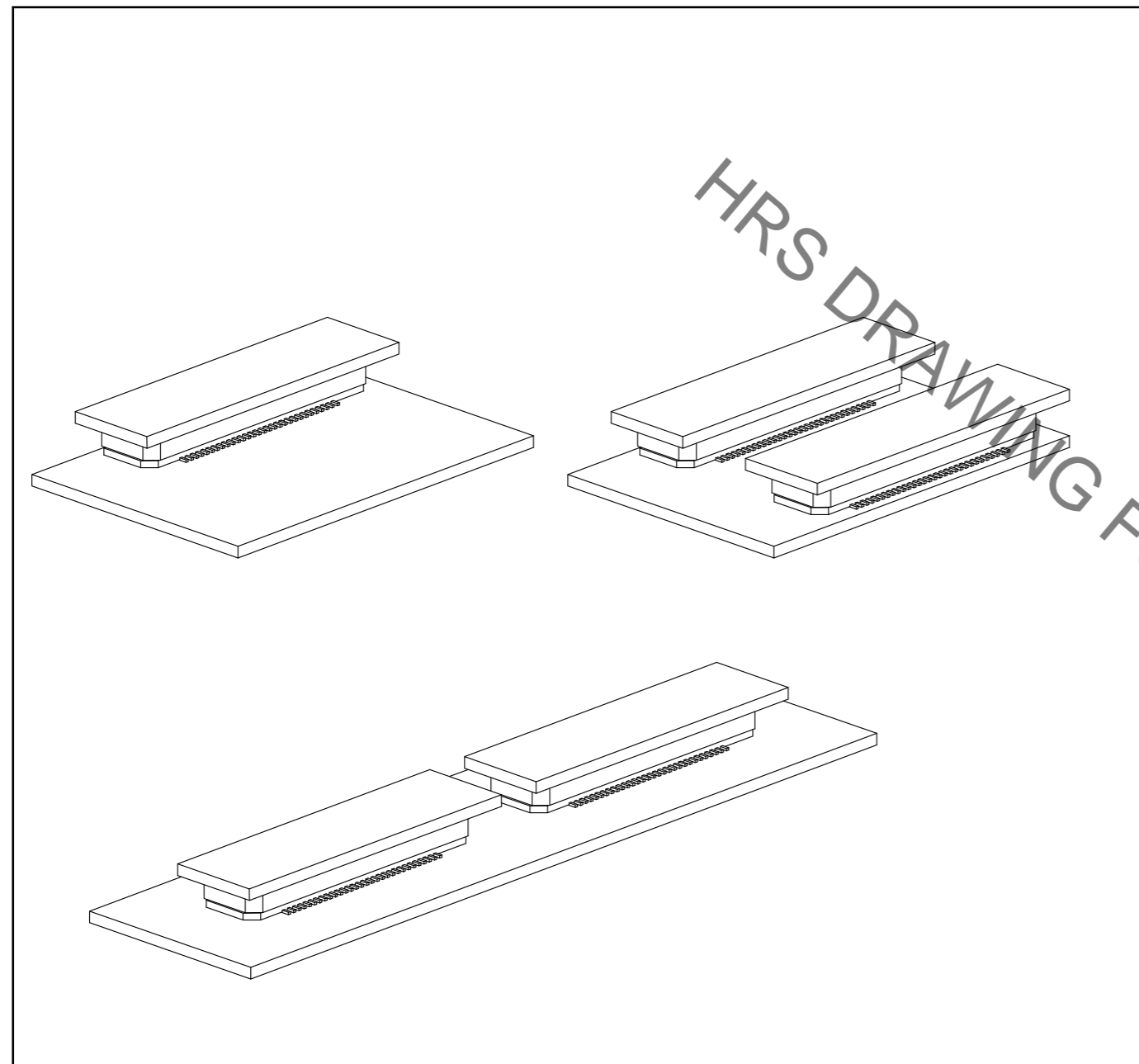


In case of consideration for using Automotive equipment / device which demand high reliability, kindly contact our sales window correspondents.

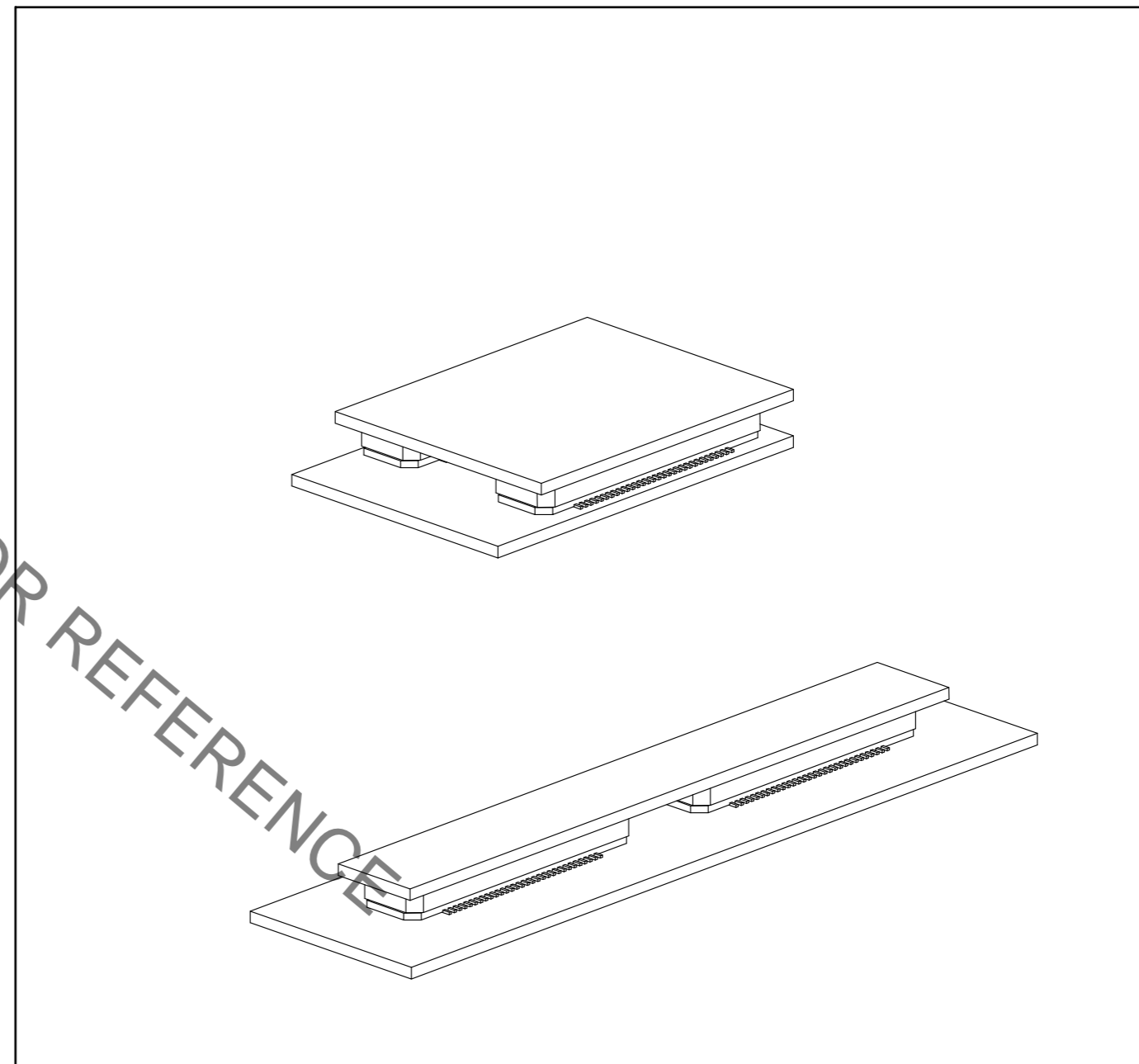
【 Precaution 】

When a board with multiple connectors mounted is mated, the connector may be damaged or deformed.  
Please divide one side of the board so only one connector is mated per board.

OK



NG



HRS DRAWING FOR REFERENCE

<b>HRS</b>	DRAWING NO.	EDC-150875-91-21
	PART NO.	FX8C-140P-SV6(91)
	CODE NO.	CL578-0607-0-91
		3/3